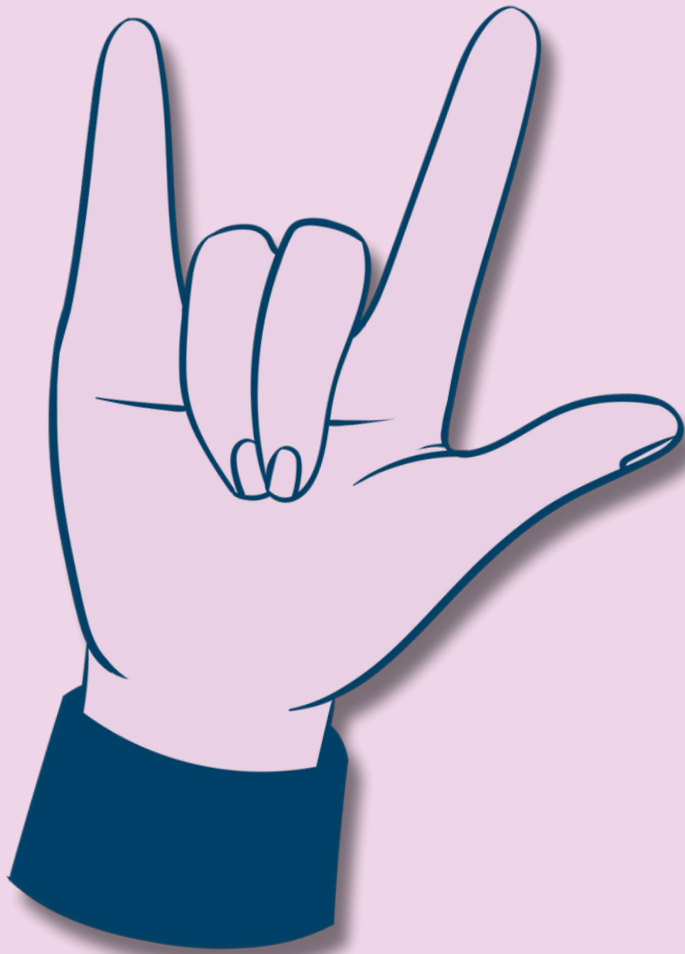




**COMPREHENSIVE
SERVICE CENTER**
FOR PEOPLE WHO ARE
DEAF, HARD OF HEARING, OR DEAF-BLIND



This group was requested by moms who want to meet and sign with others.



Signing Moms

Drop off the kids and join us for a relaxed morning of ASL, coffee, and camaraderie! Whether you're new to signing or already fluent, this is a welcoming space to practice, chat, and connect with other moms of a child with hearing loss before the weekend begins.



Register:
<https://bit.ly/cschawaii>

Fridays at CSC * 9:30 am-10:30 am * 4/4/25 - 5/30/25
CSC 1953 S. Beretania St, Ste 5A **No class 4/18. Holiday**